

TIIG
INJURY SURVEILLANCE IN THE NORTH WEST OF ENGLAND

FURNESS GENERAL HOSPITAL EMERGENCY DEPARTMENT

MONTHLY BULLETIN: OCTOBER 2013 TO SEPTEMBER 2014

This bulletin provides a breakdown of all injury attendances to Furness General Hospital Emergency Department (ED) between October 2013 and September 2014.

During this twelve month period there were 7,153 injury attendances. The month with the highest number of attendances, calculated as a daily average, was April 2014 (24 per day) compared to January 2014, the month with the fewest (15 per day; **Figure 1**).

There were more males attending the ED in 2013/14 (n=4,001; 56%; **Figure 1**). Just over three in ten (31%) were aged between 30 and 59 years (n=2,184), followed by 28% aged between 15 and 29 years (n=1,983) and 23% aged 60 years and above (n=1,626; **Figure 2**).

Table 1 shows the injury group of attendances between October 2013 and September 2014. Over seven in ten (73%) attendances were categorised as 'other' injury (n=5,194). Sports injury accounted for 13% of attendances (n=946) and 7% were due to road traffic collisions (n=468). Deliberate self-harm (n=279) and assaults (n=266) each accounted for 4% of injury attendances.

The referral source to the ED is detailed in **Table 2**. The majority (89%) were self-referred (n=6,347), while 8% were referred by their General Practitioner (GP; n=554) and 3% were referred by the emergency services (n=246).

Table 3 illustrates the incident location. Almost half (47%) of incidents were recorded as occurring in 'other' location (n=3,356), while under one-quarter

(23%) occurred in a public place (n=1,634) and one-fifth (20%) occurred in the home (n=1,429).

The discharge destination for ED attendances is displayed in **Table 4**. Just over three in ten (31%) were discharged from hospital with no follow-up treatment required (n=2,217) while one-quarter (25%) were discharged from hospital with follow-up treatment to be provided by a GP (n=1,792). Just under one-fifth (19%) were admitted to hospital (n=1,383) and 10% were referred to the fracture clinic (n=708).

Assault attendances

Between October 2013 and September 2014 there were 266 assault attendances to Furness General Hospital ED.

Under three-quarters (73%) of attendees presenting to the ED with assault-related injuries were male (n=195; **Figure 3**). Over half (56%) were aged between 15 and 29 years (n=149) while just under two in five (37%) were aged between 30 and 59 years (n=99; **Table 5**).

The assault location is shown in **Table 6**. Over half (54%) of assaults occurred in a public place (n=143) and a quarter (25%) occurred in the home (n=67).

Table 7 illustrates the disposal method of assault attendances. Just under half (49%) required follow-up treatment (n=131) and 39% were discharged from hospital with no follow-up treatment required (n=104). Five per cent were admitted to hospital (n=14).

Figure 1: ED injury attendances by gender and month, October 2013 to September 2014

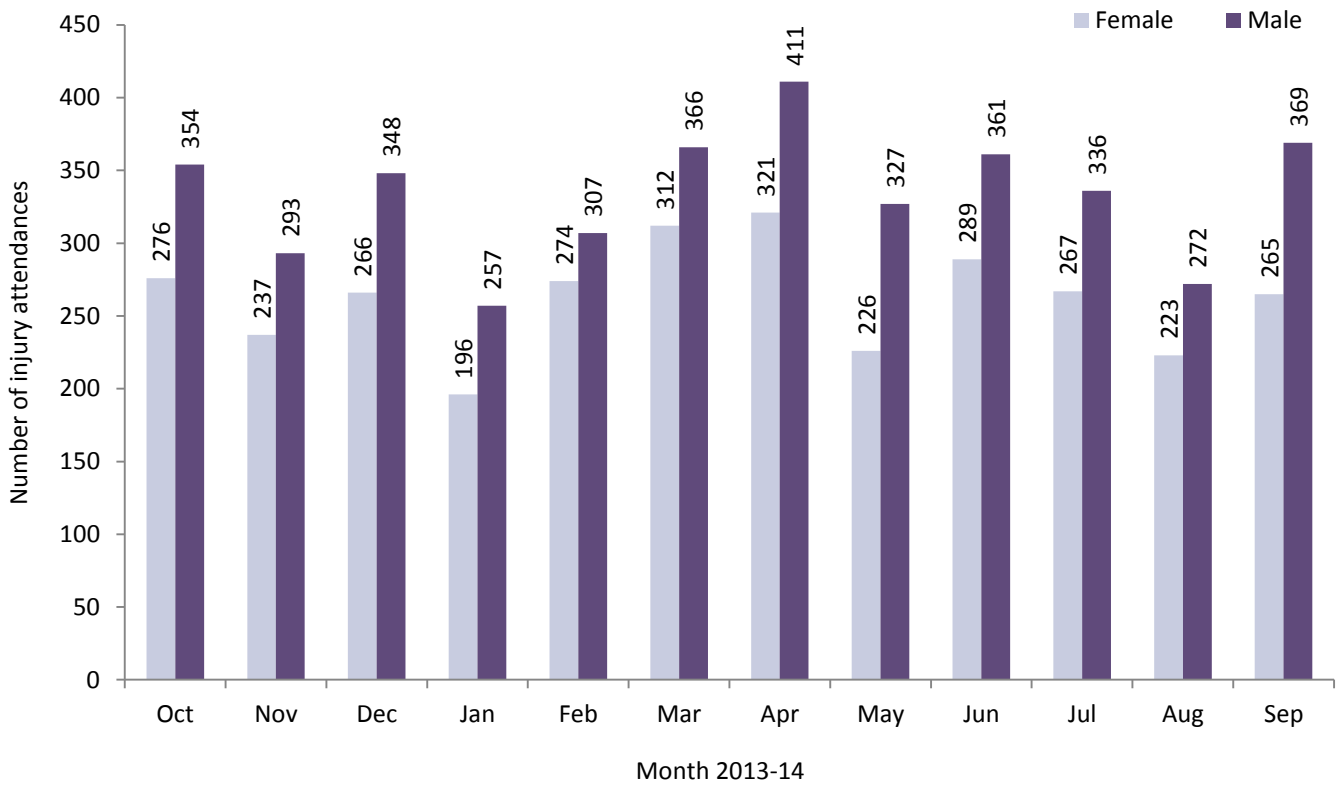


Figure 2: ED injury attendances by age group and month, October 2013 to September 2014

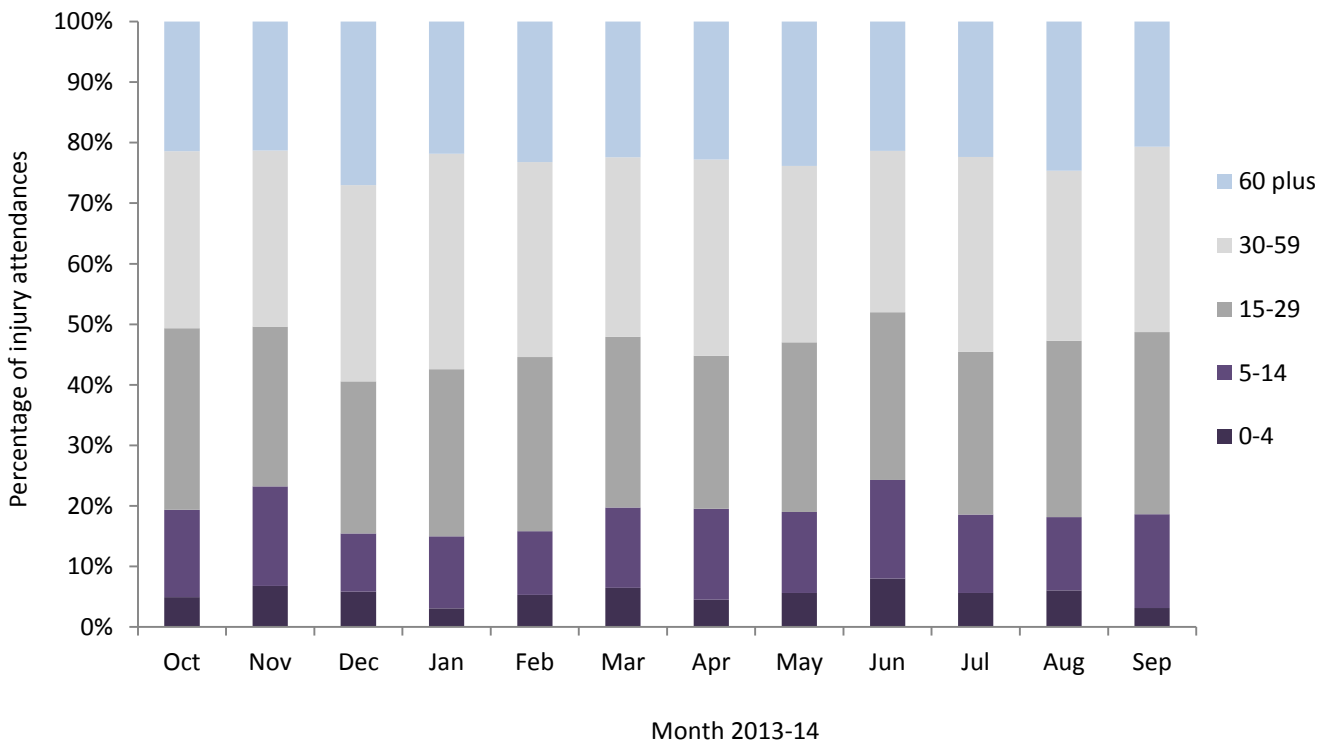


Table 1: ED injury attendances by injury group and month, October 2013 to September 2014¹

Injury group	Oct	Nov	Dec	Jan	Feb	Mar	Apr	May	Jun	Jul	Aug	Sep	Total	%
Other injury	441	374	454	300	461	513	551	399	479	447	360	415	5194	73%
Sports injury	96	76	59	56	48	87	89	79	82	83	66	125	946	13%
Road traffic collision	44	28	53	45	34	37	43	38	45	36	26	39	468	7%
Deliberate self-harm	28	24	23	30	18	22	24	21	24	16	26	23	279	4%
Assault	21	28	25	22	20	19	25	16	20	21	17	32	266	4%
Total	630	530	614	453	581	678	732	553	650	603	495	634	7153	100%

¹ Due to low numbers, firework injuries have been included in the 'other' injury category (n=9).

Table 2: ED injury attendances by referral source and month, October 2013 to September 2014¹

Referral source	Oct	Nov	Dec	Jan	Feb	Mar	Apr	May	Jun	Jul	Aug	Sep	Total	%
Self-referral	571	488	543	404	488	605	644	488	577	543	429	567	6347	89%
General medical practitioner	36	25	50	25	68	53	63	54	53	37	40	50	554	8%
Emergency services	<25	<20	<25	<25	25	<20	25	11	20	23	<30	17	246	3%
Police	***	***	0	***	0	0	0	0	0	0	0	0	***	0%
Educational establishment	0	0	***	0	0	***	0	0	0	0	0	0	***	0%
Other	0	0	0	0	0	0	0	0	0	0	***	0	***	0%
Total	630	530	614	453	581	678	732	553	650	603	495	634	7153	100

Table 3: ED injury attendances by incident location and month, October 2013 to September 2014¹

Incident location	Oct	Nov	Dec	Jan	Feb	Mar	Apr	May	Jun	Jul	Aug	Sep	Total	%
Other	269	176	305	181	296	343	389	296	313	217	258	313	3356	47%
Public place	150	156	121	103	101	122	158	103	134	190	127	169	1634	23%
Home	125	123	138	125	110	142	123	99	125	138	90	91	1429	20%
Work	42	38	31	19	46	29	38	28	35	<40	<20	26	386	5%
Educational establishment	44	37	19	25	28	42	24	27	43	<25	***	35	348	5%
Total	630	530	614	453	581	678	732	553	650	603	495	634	7153	100%

Table 4: ED injury attendances by discharge destination and month, October 2013 to September 2014^{1,2}

Discharge destination	Oct	Nov	Dec	Jan	Feb	Mar	Apr	May	Jun	Jul	Aug	Sep	Total	%
Discharged - no follow-up	219	207	184	162	161	200	189	154	190	208	131	212	2217	31%
Discharged - follow-up care by GP	134	113	154	98	151	182	192	148	182	159	141	138	1792	25%
Admitted	103	75	130	95	120	133	172	131	120	78	104	122	1383	19%
Fracture clinic	70	59	60	46	60	60	72	51	54	59	53	64	708	10%
Follow-up within ED	46	33	27	11	19	41	33	30	42	40	22	35	379	5%
Out-patient clinic	24	19	23	22	27	19	25	14	22	27	20	23	265	4%
Left before being treated	9	6	11	8	19	17	29	10	18	15	11	22	175	2%
Transferred to other HCP	16	10	18	***	10	14	10	9	14	<10	5	6	123	2%
Other health care professional	***	***	***	***	5	6	6	***	***	6	***	8	52	1%
Left having refused treatment	***	***	0	***	7	***	***	***	***	***	***	***	29	0%
Other	***	***	***	5	***	***	0	***	***	0	***	***	21	0%
Died in department	0	0	***	***	***	***	***	***	0	0	0	0	<10	0%
Restored to ward	0	0	0	0	0	0	***	0	0	0	0	0	***	0%
Total	630	530	614	453	581	678	732	553	650	603	495	634	7153	100%

¹ Please note that all numbers less than five have been suppressed (with ***) in line with patient confidentiality. If there is only one number less than five in a category then two numbers have been suppressed to prevent back calculations from totals.

Percentages may not add up to 100% due to rounding.

² GP = General Practitioner; HCP = Health care provider.

ASSAULTS

Figure 3: ED assault attendances by gender and month, October 2013 to September 2014³

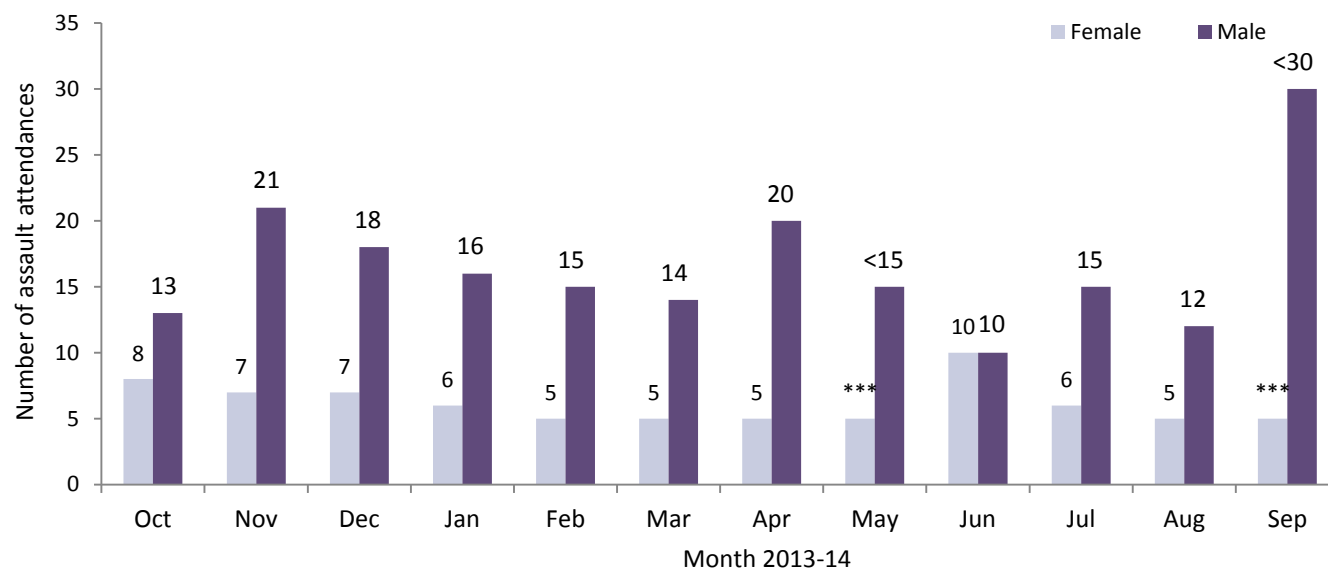


Table 5: ED assault attendances by age group and month, October 2013 to September 2014^{5,3}

Age group	Oct	Nov	Dec	Jan	Feb	Mar	Apr	May	Jun	Jul	Aug	Sep	Total	%
5-14	***	***	0	***	0	***	***	0	***	0	0	***	9	3%
15-29	14	15	14	<10	16	10	11	<15	10	12	10	16	149	56%
30-59	<10	<15	<10	12	***	<10	12	***	8	9	7	12	99	37%
60 plus	0	0	***	0	***	0	***	0	***	0	0	***	9	3%
Total	21	28	25	22	20	19	25	16	20	21	17	32	266	100%

⁵ There were no assault attendances in the 0-4 years category.

Table 6: ED assault attendances by incident location and month, October 2013 to September 2014³

Incident location	Oct	Nov	Dec	Jan	Feb	Mar	Apr	May	Jun	Jul	Aug	Sep	Total	%
Public place	11	21	13	10	13	10	12	8	9	12	11	13	143	54%
Home	***	***	***	7	<10	5	7	***	6	<10	***	14	67	25%
Other	5	***	6	***	***	***	***	***	***	***	***	***	32	12%
Work	0	***	***	***	0	***	***	***	***	0	***	***	18	7%
Educational establishment	***	0	0	***	0	***	0	***	***	0	0	0	6	2%
Total	21	28	25	22	20	19	25	16	20	21	17	32	266	100%

Table 7: ED assault attendances by disposal method and month, October 2013 to September 2014³

Disposal method	Oct	Nov	Dec	Jan	Feb	Mar	Apr	May	Jun	Jul	Aug	Sep	Total	%
Follow-up	10	13	13	9	9	12	16	9	12	9	5	14	131	49%
Discharged	9	13	8	11	<10	***	6	<10	5	<10	9	<20	104	39%
Other	***	***	***	***	***	***	***	***	***	***	***	0	17	6%
Admitted	***	***	***	***	0	***	***	0	***	0	***	***	14	5%
Total	21	28	25	22	20	19	25	16	20	21	17	32	266	100%

Published January 2015

Trauma and Injury Intelligence Group

Centre for Public Health, Faculty of Education, Health and Community, Liverpool John Moores University,
2nd Floor, Henry Cotton Building, Liverpool L3 2ET

T: 0151 231 4498 | E: tiig@ljmu.ac.uk | W: www.tiig.info and www.cph.org.uk | Twitter: [www.twitter.com/tiig_cph](https://twitter.com/tiig_cph)

³ Please note that all numbers less than five have been suppressed (with ***) in line with patient confidentiality. If there is only one number less than five in a category then two numbers have been suppressed to prevent back calculations from totals.

Percentages may not add up to 100% due to rounding.